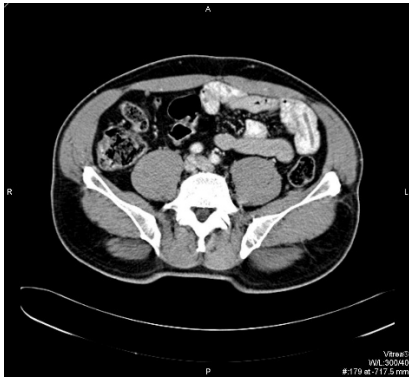


Having a CT Scan





If you have hurt a part of your body, your doctor may want you to have a CT scan – this is a photograph of the inside of your body.



A CT scan does not hurt.



You can have someone with you.



When you arrive in the CT department, the receptionist will ask you for your name and address.



Waiting Room

You will be asked to wait in a waiting area.



You may be asked to get changed into a hospital gown.



You will need to take off your watch and jewellery.

Give these things to the person supporting you to look after. You can put them back on after the scan.



When the person who takes the special photograph is ready for you, they will call you in to the scan room.

This person is called a **Radiographer**.



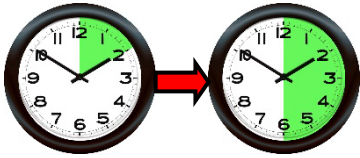
You will need to lie very still when you have the scan.

The table moves through a big circle (which is where the camera is).

It does not hurt and nothing touches you but the camera will make a noise.



The Radiographer will be able to talk to you while the scan is happening.



The scan will take between **10 and 30 minutes**.

When the scan is finished, you can get up, put your jewellery back on.



They will tell you what to do after having your CT scan.



You can then leave the hospital.



If you or the person supporting you needs help while you are in the hospital, ask a member of staff.

How to get your results:



If you were sent to the hospital by your GP, please call them after 5 days and make an appointment to see them.



If the hospital asked you to have a scan, you will be sent an appointment to see the doctor to talk about your scan in a few weeks.



If you or the person supporting you needs help while you are in the hospital, please ask one of the staff.

Reference Number: ULHT-LFT-1041

Issued: October 2023

Review Date: October 2025

Version: 2

References

If you require a full list of references for this leaflet please email patient.information@ulh.nhs.uk

United Lincolnshire Hospitals NHS Trust endeavours to ensure that the information given here is accurate and impartial.

If you require this information in another language, large print, audio or braille, please email the Patient Information team at patient.information@ulh.nhs.uk



www.ulh.nhs.uk