

LINCOLNSHIRE DIABETIC EYE SCREENING PROGRAMME

Prevention is better than cure

For more information on the Lincolnshire Diabetic Eye Screening Programme visit:

<http://www.ulh.nhs.uk>

<http://www.lincolnshire.gov.uk>

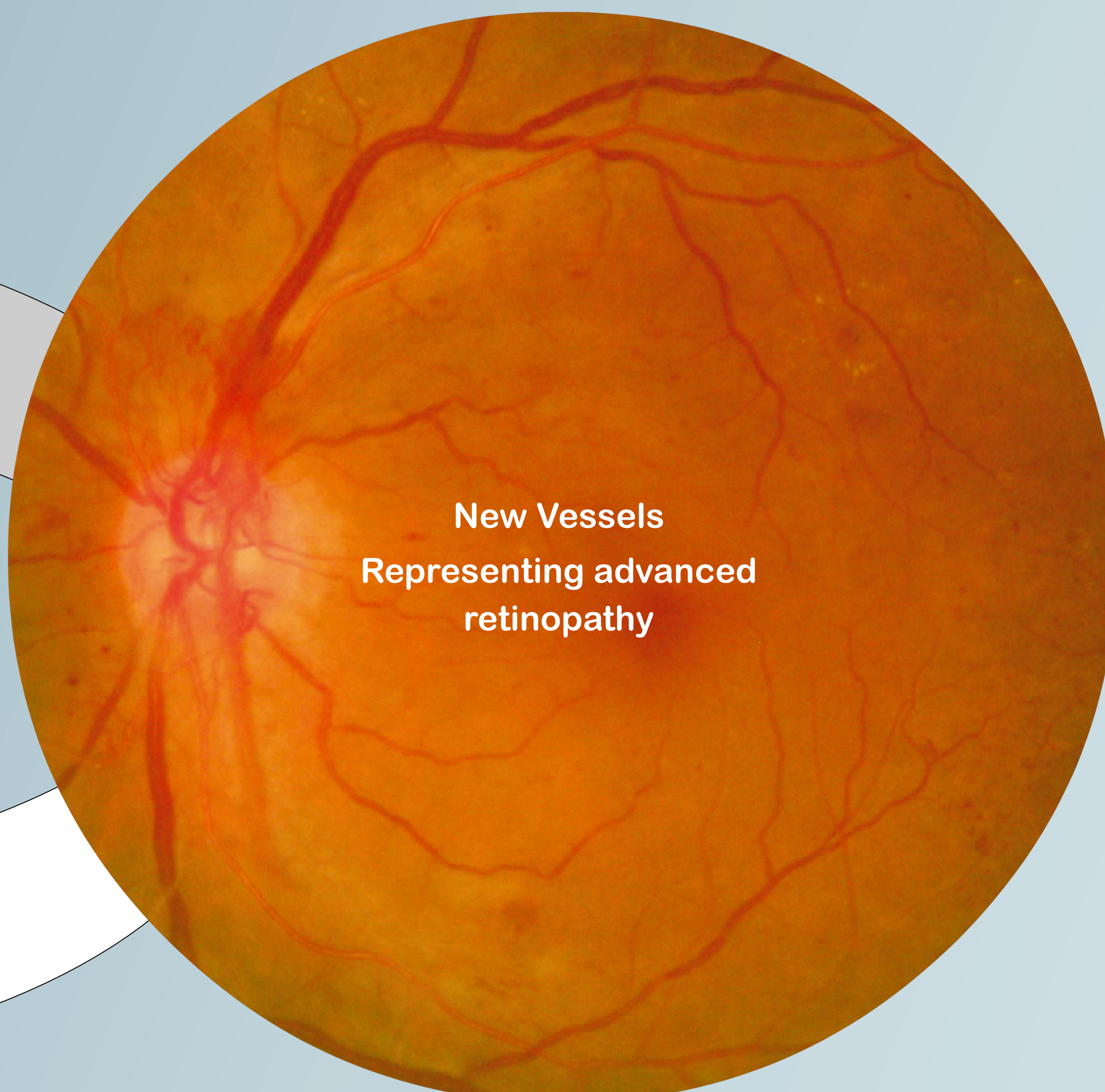
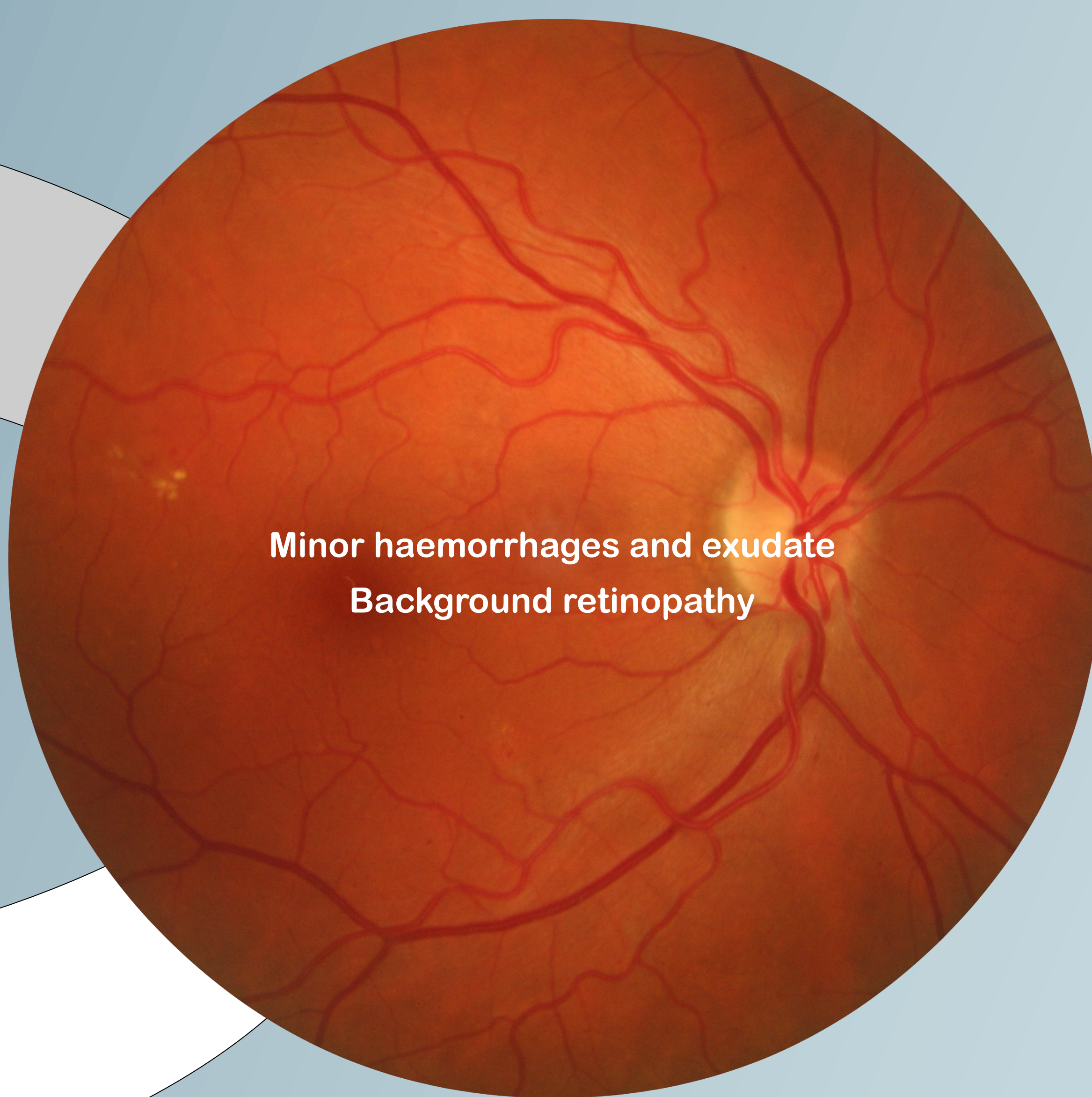
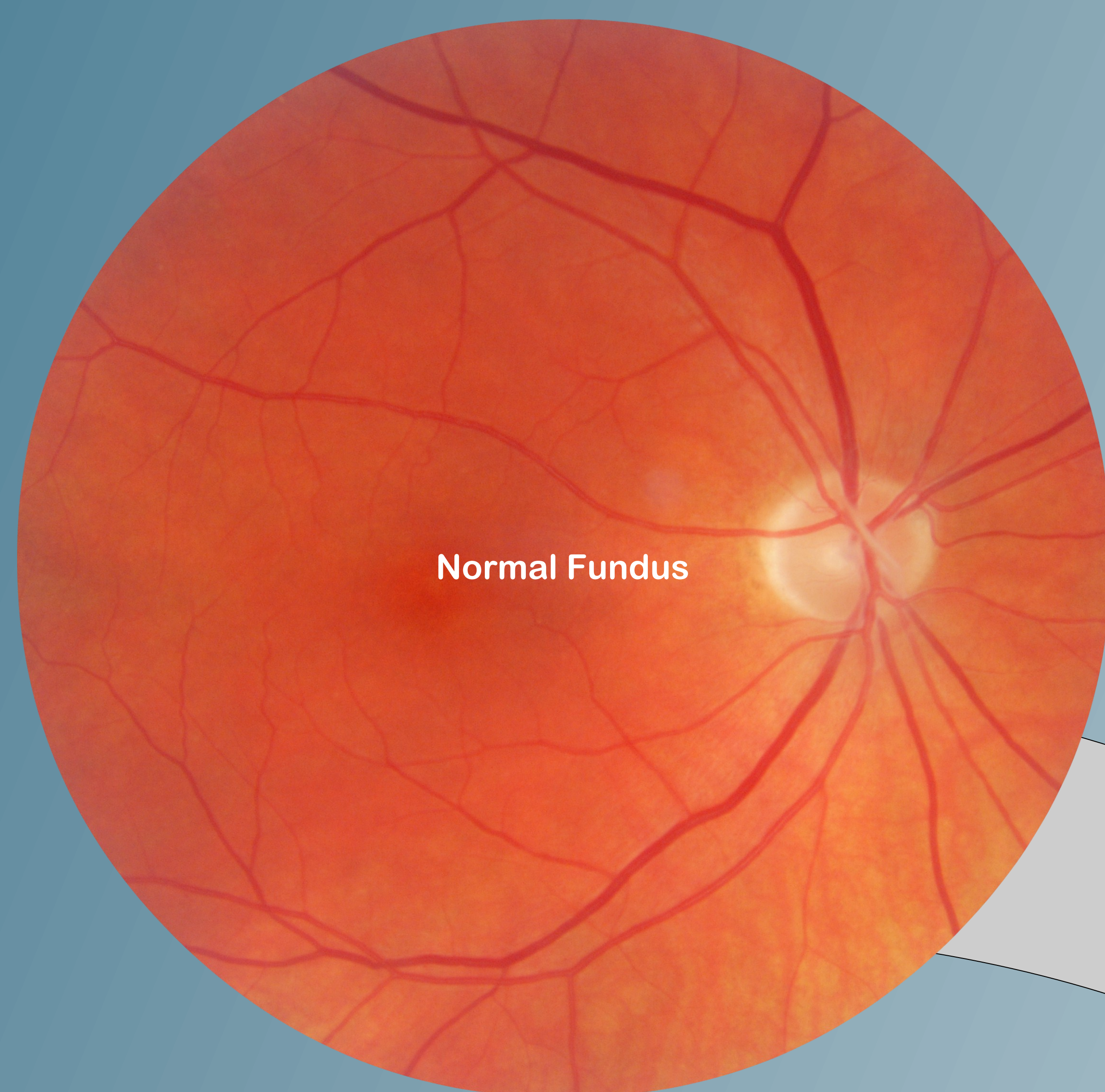
REMEMBER: Eye screening is just a part of managing your diabetes and diabetic retinopathy is treatable, especially if it is caught early.

What will happen



1. We put drops in your eyes to temporarily make your pupils larger. You may find the drops sting.
2. We take photographs of the back of your eyes. The camera does not come into contact with your eyes. We send the photographs to an expert to review.
3. The appointment will last approximately 30 minutes.
4. We send a letter to you and your GP within 6 weeks letting you know your screening results.

Progression of Diabetic Retinopathy



For more information
please email:
ulh-tr.DESP@nhs.net